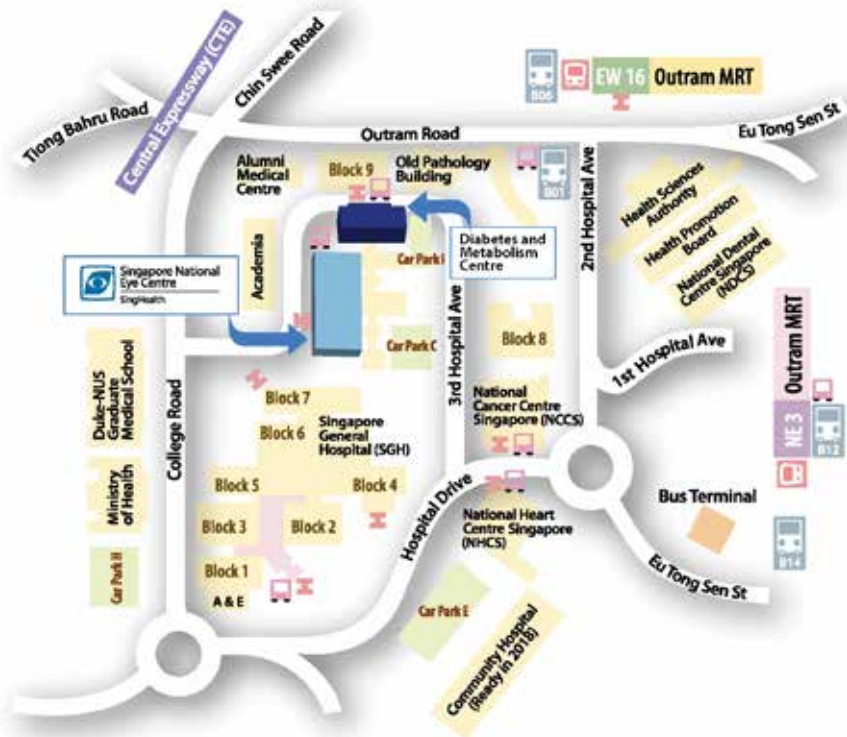


## Location Map

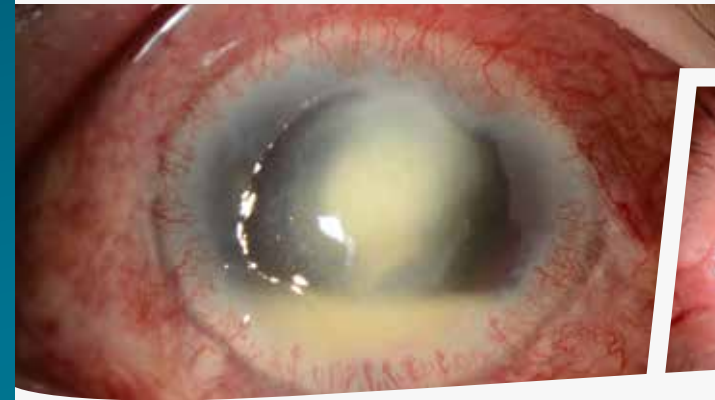
### Parking

Parking is complimentary at SNEC on a first-come-first serve basis.



### Legend

MRT Station	<b>Bus Stop 01</b> Bus No. 33, 63, 75, 174, 174e, 605, 851, 970	<b>Bus Stop 06</b> Bus No. 33, 63, 75, 174, 174e, 501, 605, 970
Taxi Stand	<b>Bus Stop 12</b> Bus No. 61, 124, 143, 147, 166, 197, 961, 961C	<b>Bus Stop 14</b> Bus No. 2, 212, 54, 62, 174, 190, 196
East West Line		
North East Line		
Shuttle Bus Service Mon to Fri (8.01am - 6.50pm) Sat (8.01am - 1.50pm)		



## Corneal Diseases and Refractive Surgery Updates For Family Physicians

### Audience/Level

General Practitioners and Family Physicians

### Venue

Auditorium, Level 4, Tower Block,  
Singapore National Eye Centre

### Date

7 July 2018  
Saturday

**SNEC**  
EDUCATION  
PROGRAMME  
2018

# Corneal Diseases and Refractive Surgery Updates For Family Physicians

**Audience/Level**  
General Practitioners  
and Family Physicians

**Venue**  
Auditorium  
Level 4, Tower Block,  
Singapore National Eye Centre

**Date**  
7 July 2018  
Saturday

**SNEC**  
EDUCATION  
PROGRAMME  
2018

## Course Outline

This course will provide Family Physicians with updates and practical information on the following topics:

- Refractive Surgery Updates
- Updates on Dry Eyes and Ocular Allergy
- Updates on Infective Keratitis
- Updates on Pterygium
- Management of Contact Lens Complications
- Updates on Corneal Transplantation

### Course Director

Assoc Prof Jodhbir Mehta  
*FRCS(Ed)*  
Head and Senior Consultant  
Corneal & External Disease  
Department

### Co-Course Director

Adj Assoc Prof Lim Li  
*MMed(Ophth), FRCS(Ed), FAMS*  
Senior Consultant  
Corneal & External Disease  
Department

### Course Faculty

Dr Anshu Arundhati  
*MMed(Ophth), FRCS(Ed)*  
Senior Consultant  
Corneal & External Disease Department

Dr Ti Seng Ei  
*MMed(Ophth), FRCS(Ed)*  
Senior Consultant  
Corneal & External Disease Department

Dr Jean Chai  
*MMed(Ophth), FRCS(Ed), FAMS*  
Consultant  
Corneal & External Disease Department

Dr Marcus Ang  
*MMed(Ophth), FRCS(Ed), FAMS*  
Consultant  
Corneal & External Disease Department

TIME	PROGRAMME	SPEAKER
1.00pm – 2.00pm	Registration and Lunch	
2.00pm – 2.05pm	Welcome by Course Director	Assoc Prof Jod Mehta
2.05pm – 2.25pm	Refractive Surgery Updates	Dr Jean Chai
2.25pm – 2.40pm	Updates on Dry Eyes and Ocular Allergy	Dr Anshu Arundhati
2.40pm – 3.00pm	Updates on Infective Keratitis	Dr Ti Seng Ei
3.00pm – 3.15pm	Updates on Pterygium	Dr Khor Wei Boon
3.15pm – 3.30pm	Management of Contact Lens Complications	Adj Assoc Prof Lim Li
3.30pm – 3.50pm	Updates on Corneal Transplantation	Dr Marcus Ang
3.50pm – 4.00pm	Q&A Session	All Faculty

Upon approval from Singapore Medical Council, this session may be accredited for 2 CME core points.

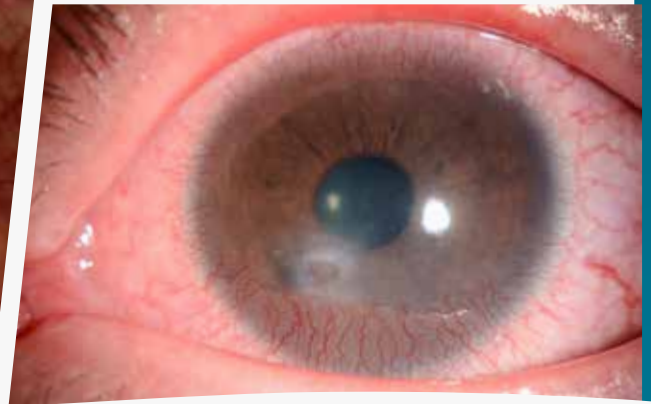
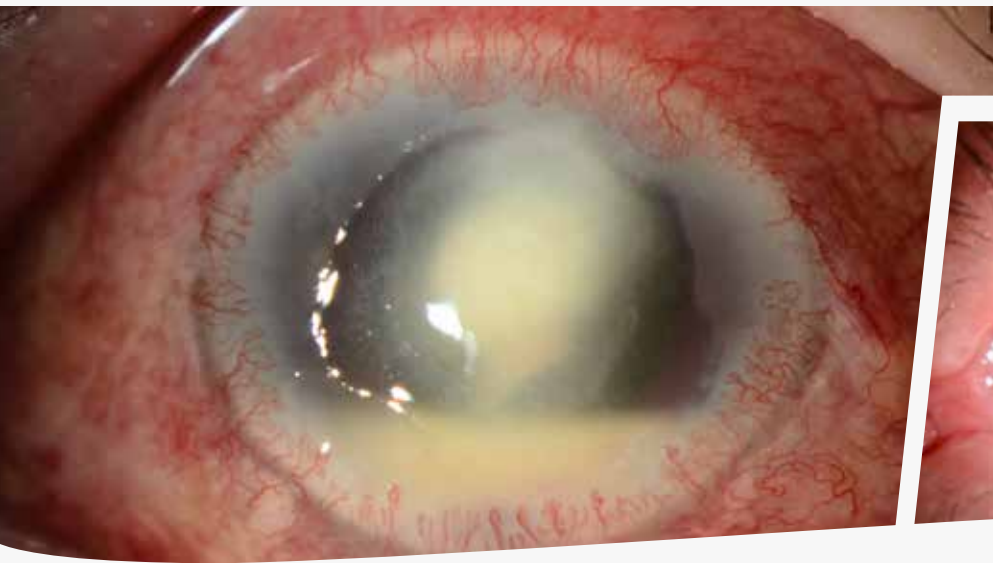
## Registration

As there are limited places available, we strongly encourage participants to register one week in advance. You may register for this session through our website or email.

**Website:** [www.snecmeetings.org](http://www.snecmeetings.org)

**Email:** [meet@snec.com.sg](mailto:meet@snec.com.sg)

**Registration closing date:** 29 June 2018



# Corneal Diseases and Refractive Surgery Updates For Family Physicians

## Audience/Level

General Practitioners and Family Physicians

## Venue

Auditorium, Level 4, Tower Block,  
Singapore National Eye Centre

## Date

7 July 2018  
Saturday

**SNEC**  
EDUCATION  
PROGRAMME  
2018



Singapore National  
Eye Centre  
SingHealth